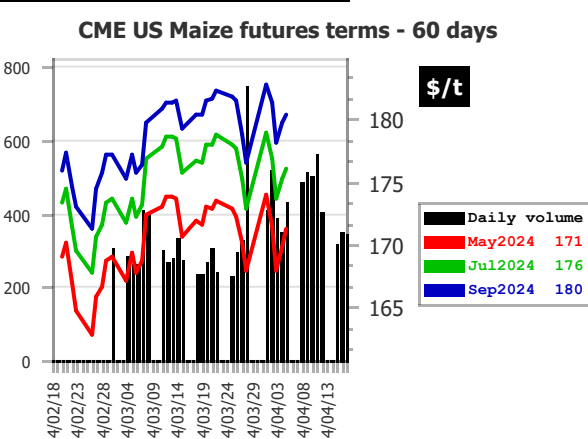
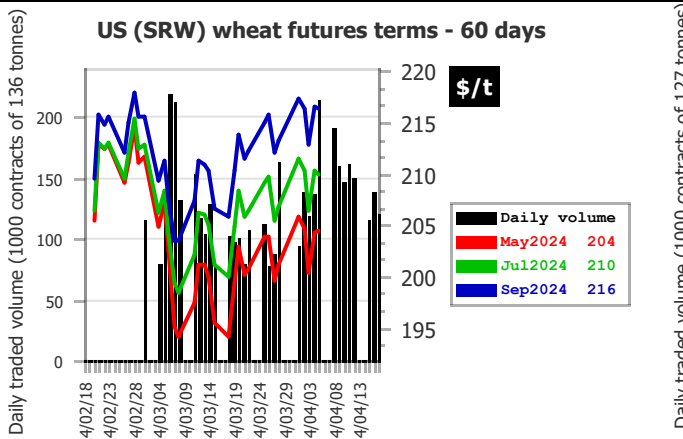
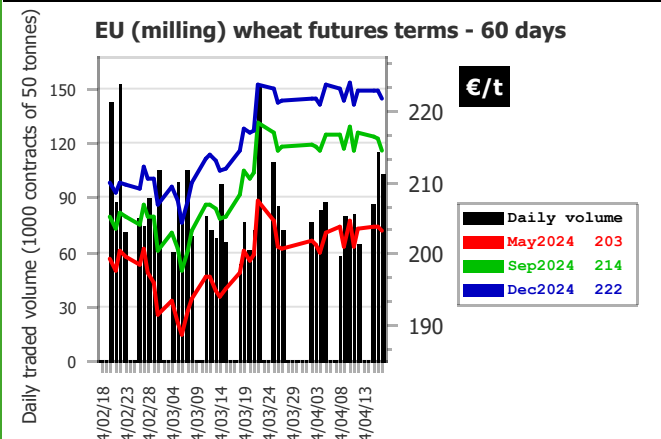
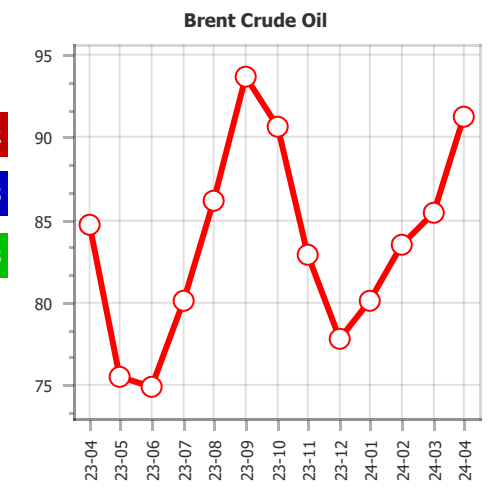
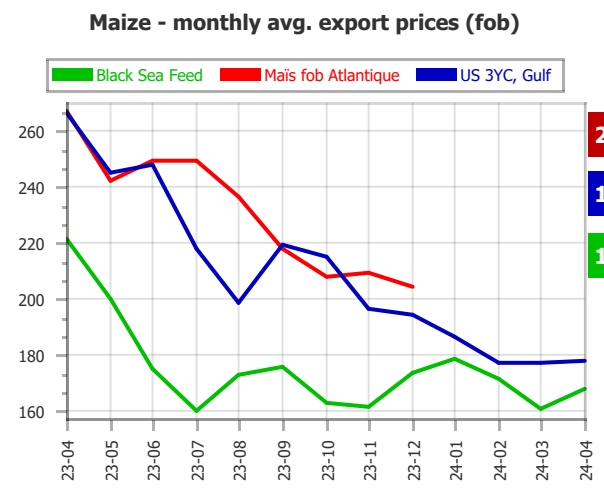
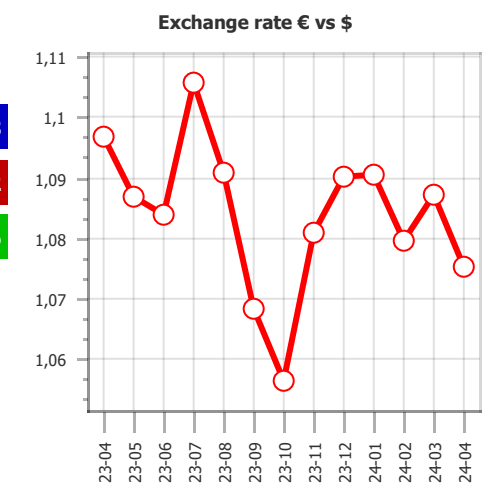
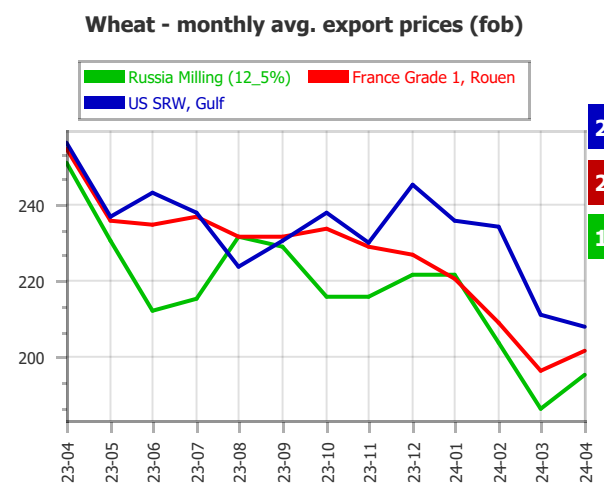
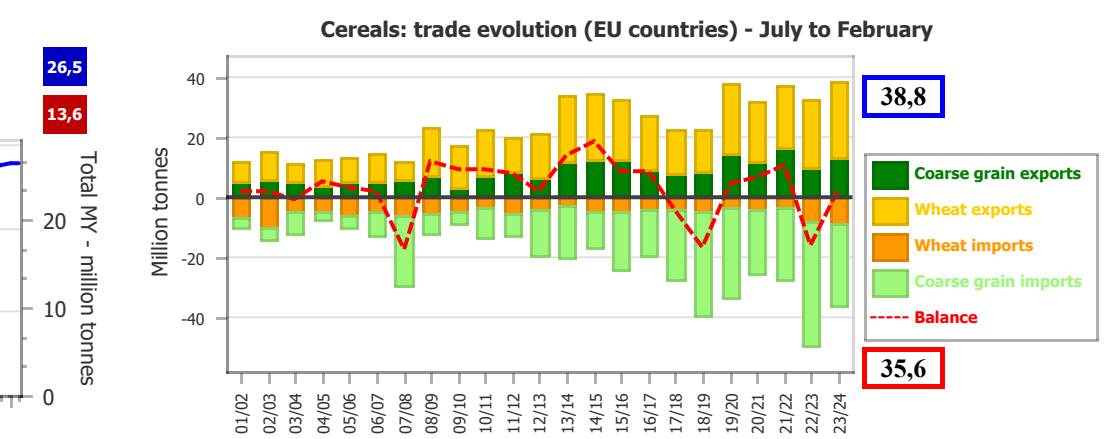
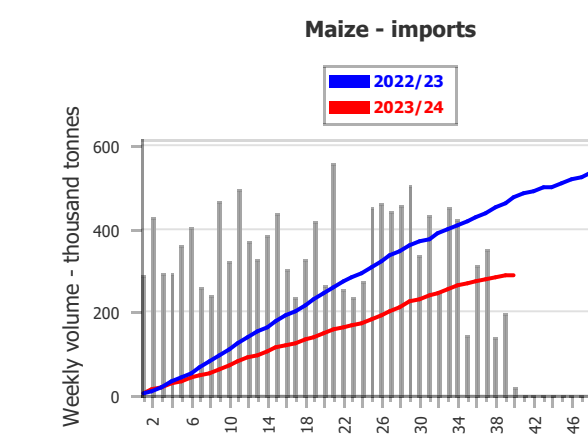
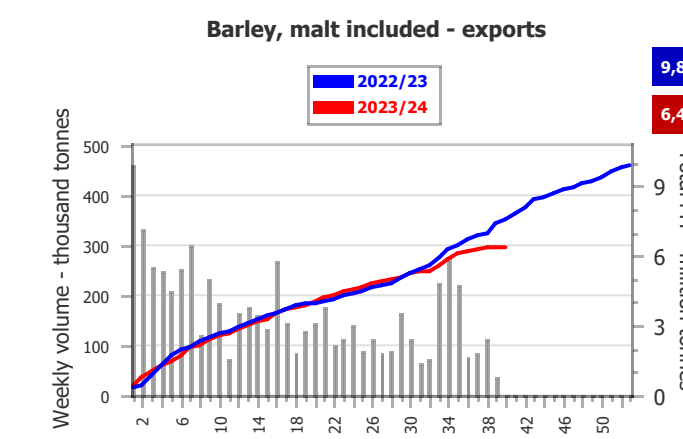
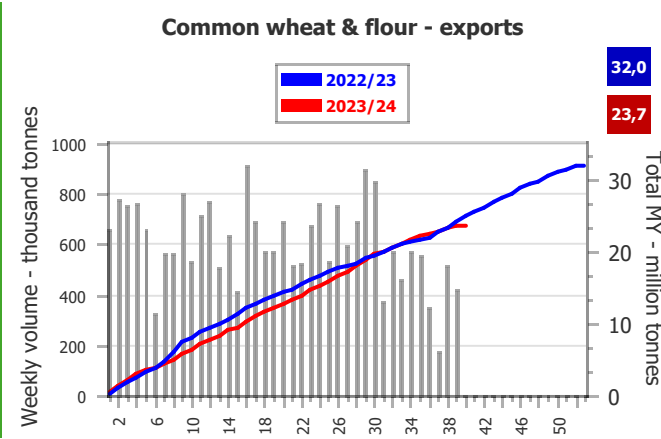
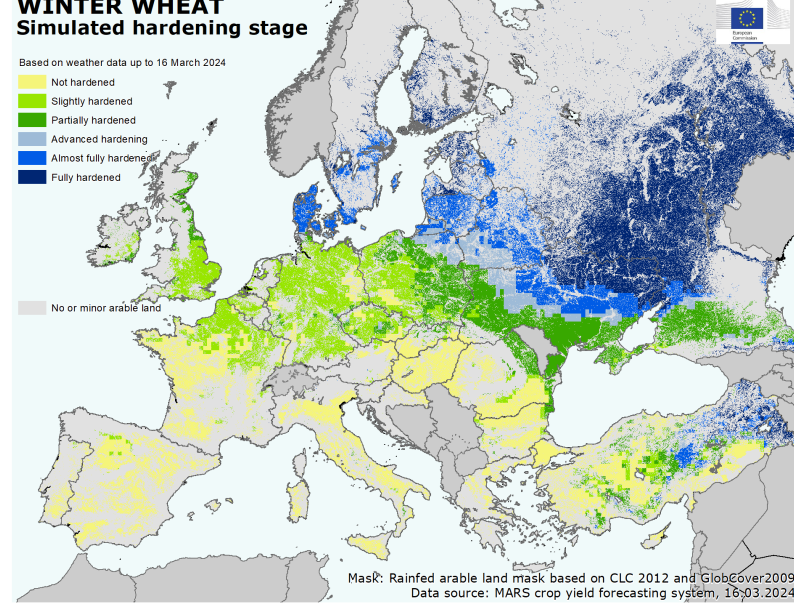
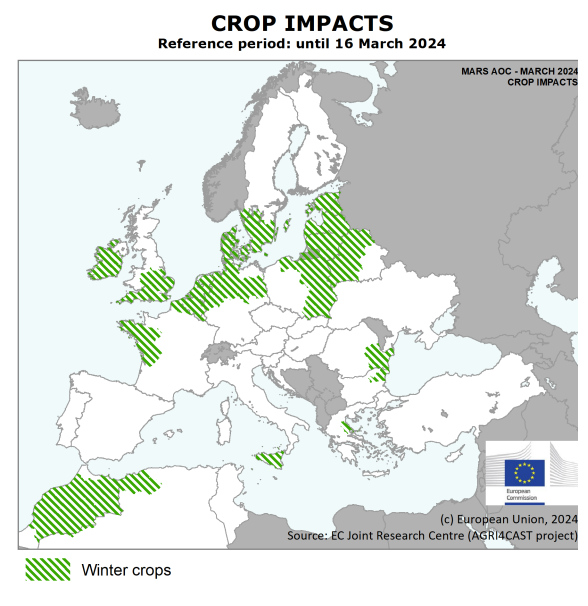


Export prices FOB on 16-04-2024						
Name	€/t	\$/t	€/t (m/m var.)	\$/t (m/m var.)	€/t (y/y var.)	\$/t (y/y var.)
Wheat, Canada 1 CWAD, St_Lawrence	336	357	▲ +2%	▼ -1%	▼ -7%	▼ -10%
Wheat, EU (France) Grade 1, Rouen	203	216	▲ +3%	▲ +1%	▼ -23%	▼ -26%
Wheat, US HRW (11_5%), Gulf	253	269	▲ +3%	▼ 0%	▼ -29%	▼ -31%
Wheat, US SRW, Gulf	207	220	▼ 0%	▼ -2%	▼ -22%	▼ -25%
Durum wheat, EU (France), Port la Nouvelle	N.Q.	-	-	-	-	-
Barley, Black Sea Feed	172	183	▲ +6%	▲ +4%	▼ -23%	▼ -25%
Barley, EU (France) Feed, Rouen	193	205	▲ +5%	▲ +2%	▼ -23%	▼ -25%
Maize, EU (France), Bordeaux	N.Q.	-	-	-	-	-
Maize, US 3YC, Gulf	180	191	▲ +1%	▼ -1%	▼ -35%	▼ -37%
Soyabean, US 2Y (Gulf)	416	443	▼ -1%	▼ -4%	▼ -24%	▼ -26%



Weather & crops conditions

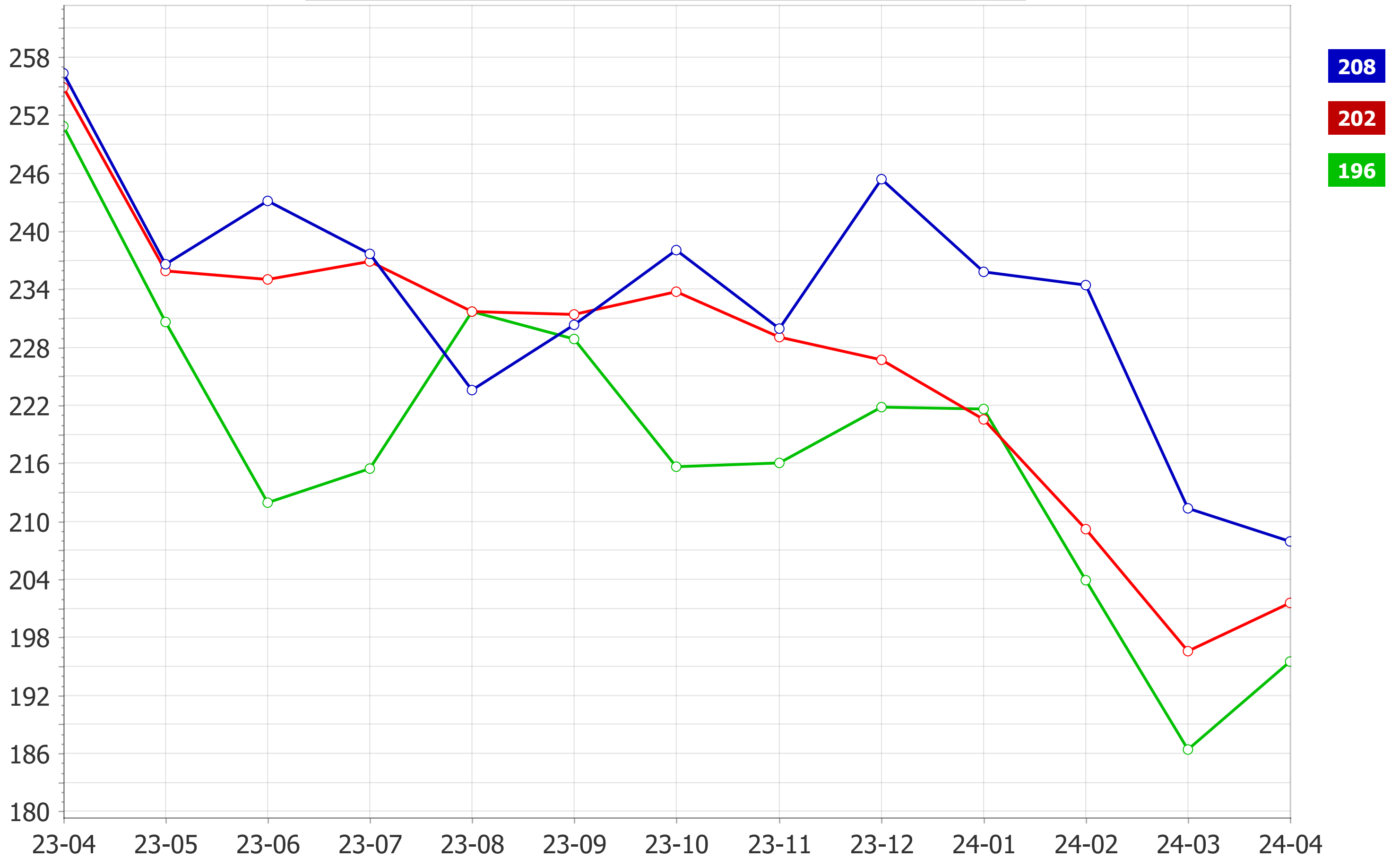


Export prices FOB on 16-04-2024										
Name	€/t	\$/t		€/t (m/m var.)		\$/t (m/m var.)		€/t (y/y var.)		\$/t (y/y var.)
Wheat, Canada 1 CWAD, St_Lawrence	336	357	▲	+2%		-1%	▼	-7%	▼	-10%
Wheat, EU (France) Grade 1, Rouen	203	216	▲	+3%		+1%	▼	-23%	▼	-26%
Wheat, US HRW (11_5%), Gulf	253	269	▲	+3%		0%	▼	-29%	▼	-31%
Wheat, US SRW, Gulf	207	220		0%	▼	-2%	▼	-22%	▼	-25%
Durum wheat, EU (France), Port la Nouvelle	N.Q.	-		-		-		-		-
Barley, Black Sea Feed	172	183	▲	+6%	▲	+4%	▼	-23%	▼	-25%
Barley, EU (France) Feed, Rouen	193	205	▲	+5%	▲	+2%	▼	-23%	▼	-25%
Maize, EU (France), Bordeaux	N.Q.	-		-		-		-		-
Maize, US 3YC, Gulf	180	191	▲	+1%	▼	-1%	▼	-35%	▼	-37%
Soyabeans, US 2Y (Gulf)	416	443	▼	-1%	▼	-4%	▼	-24%	▼	-26%

Sources: International Grains Council, France Agrimer

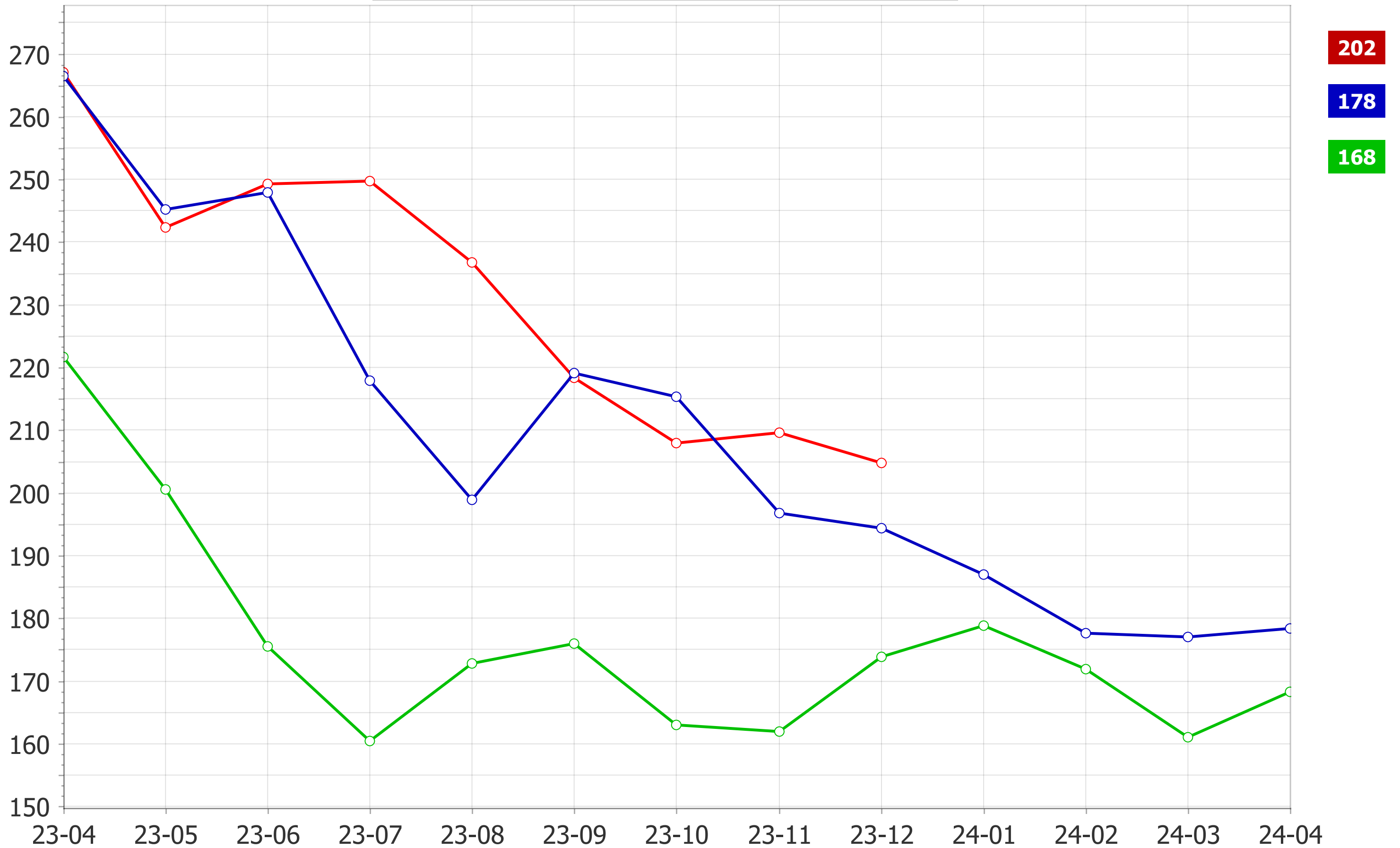
Wheat - monthly avg. export prices (fob)

— Russia Milling (12_5%) — France Grade 1, Rouen — US SRW, Gulf

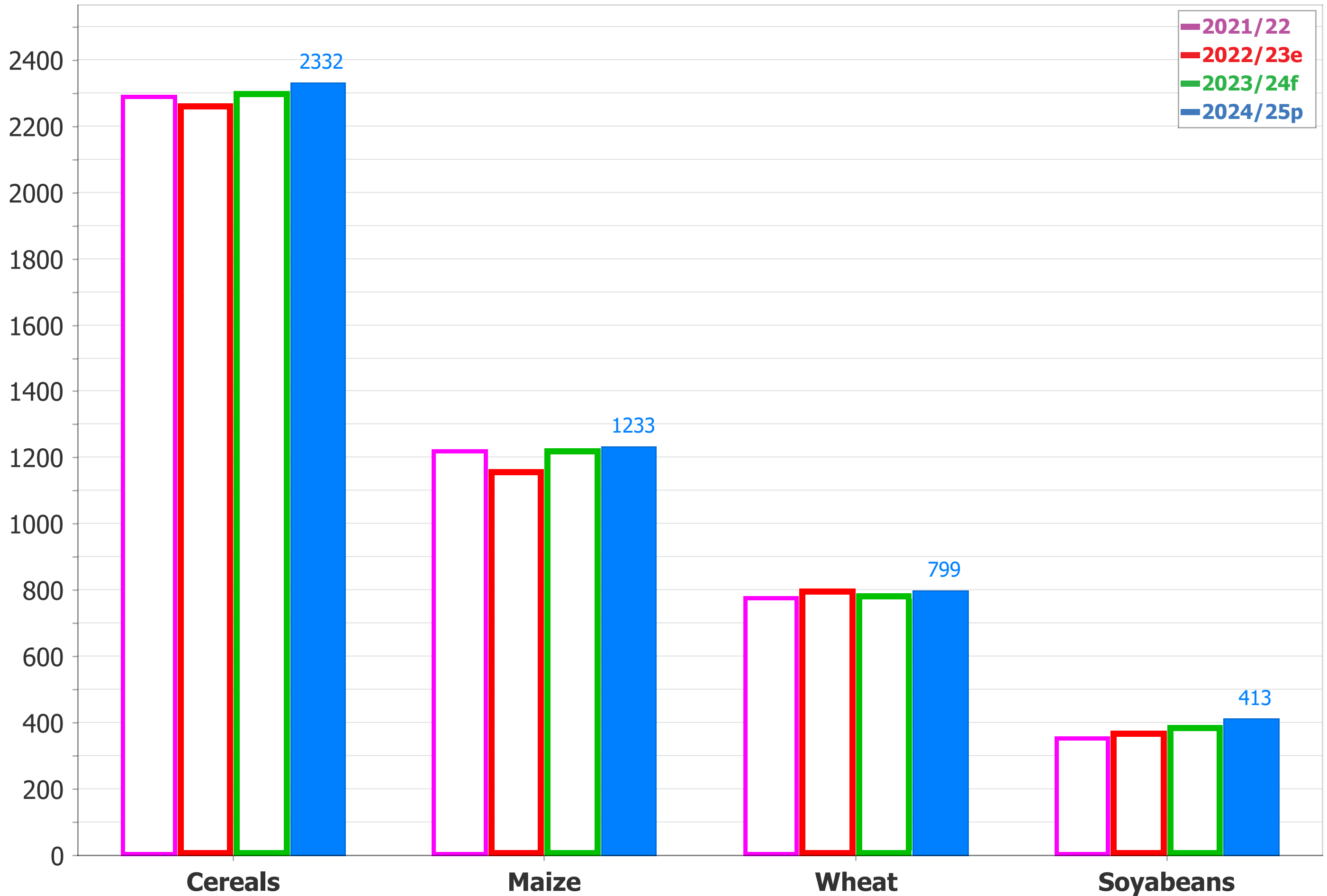


Maize - monthly avg. export prices (fob)

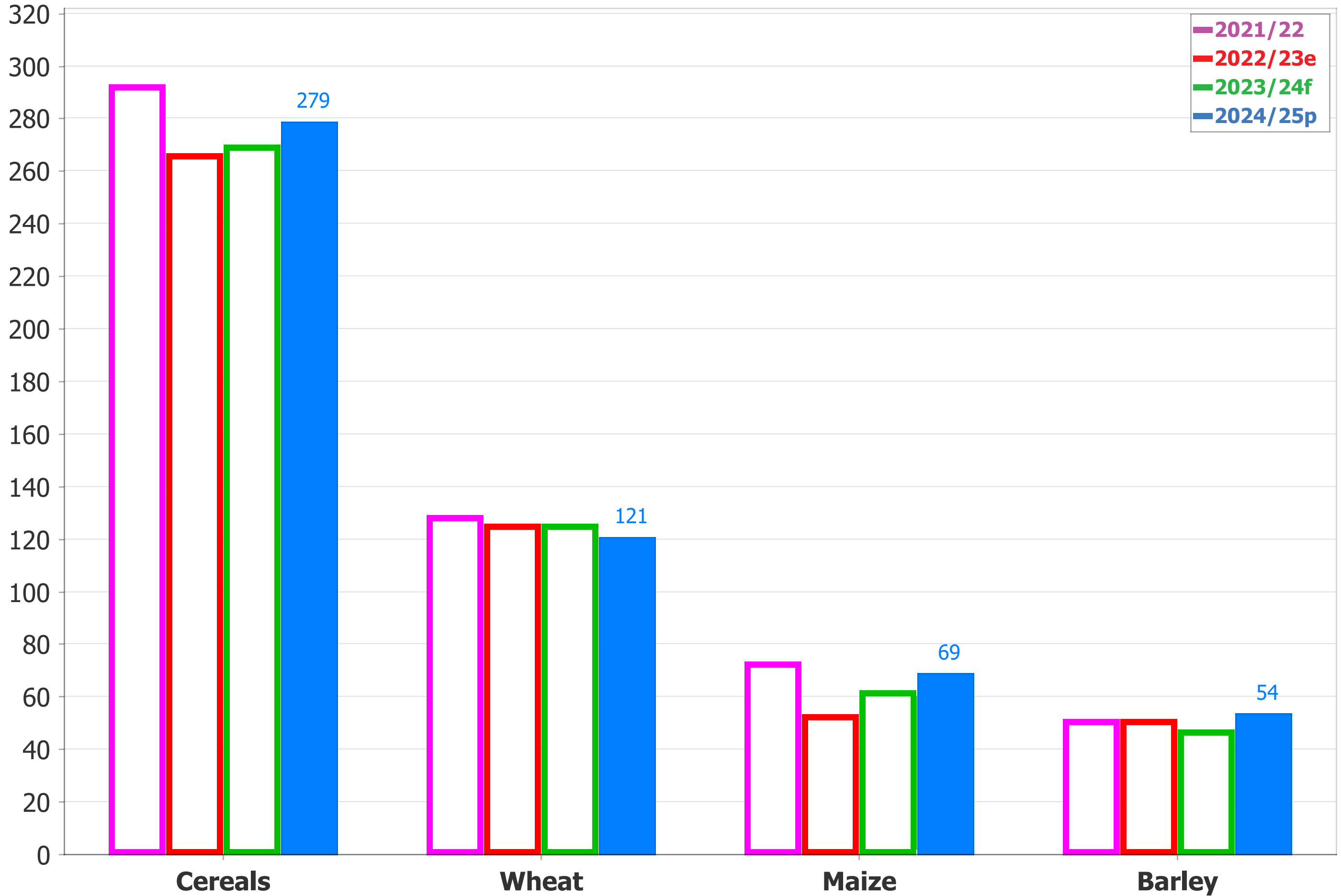
— Black Sea Feed — Maïs fob Atlantique — US 3YC, Gulf



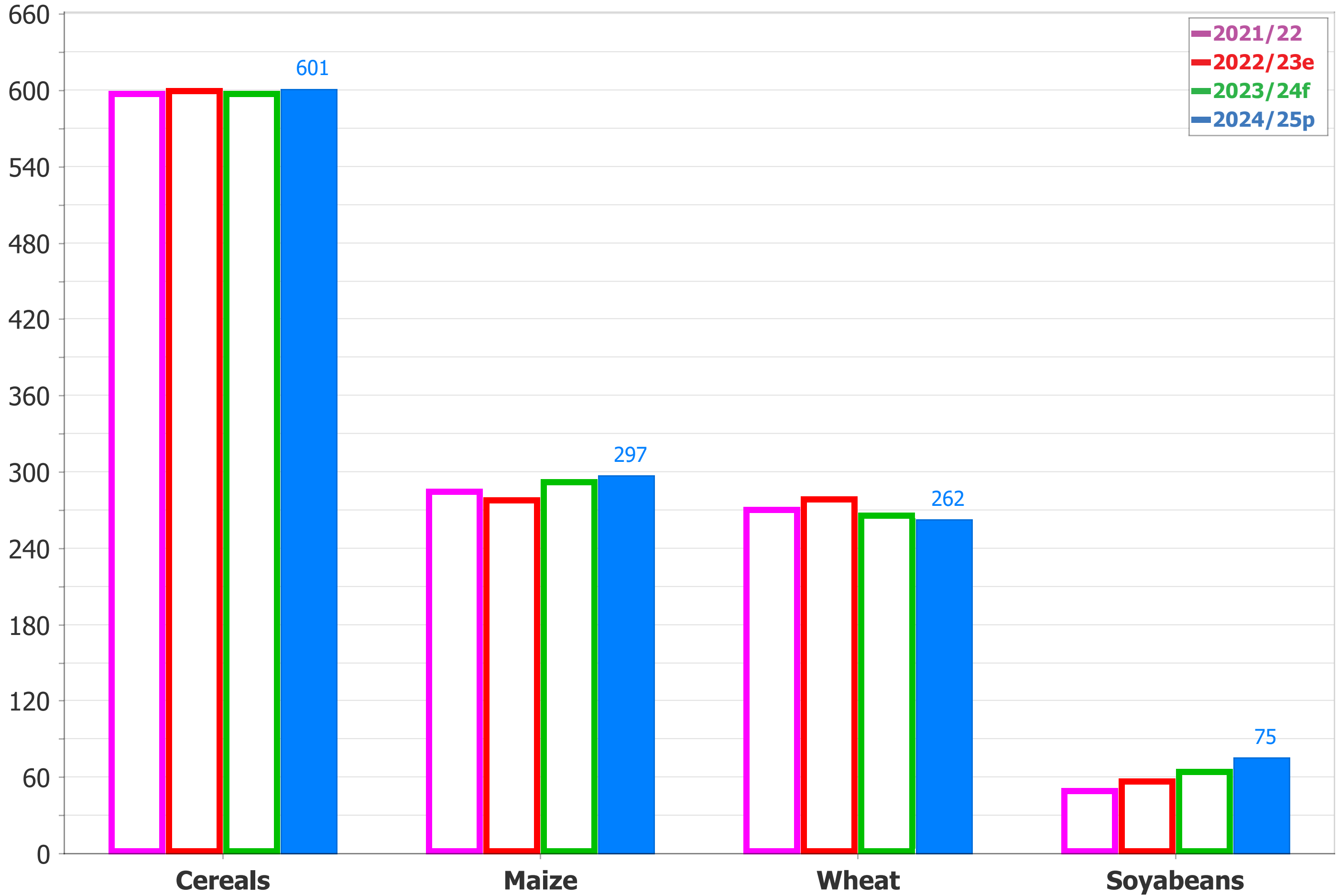
World production (million tonnes)



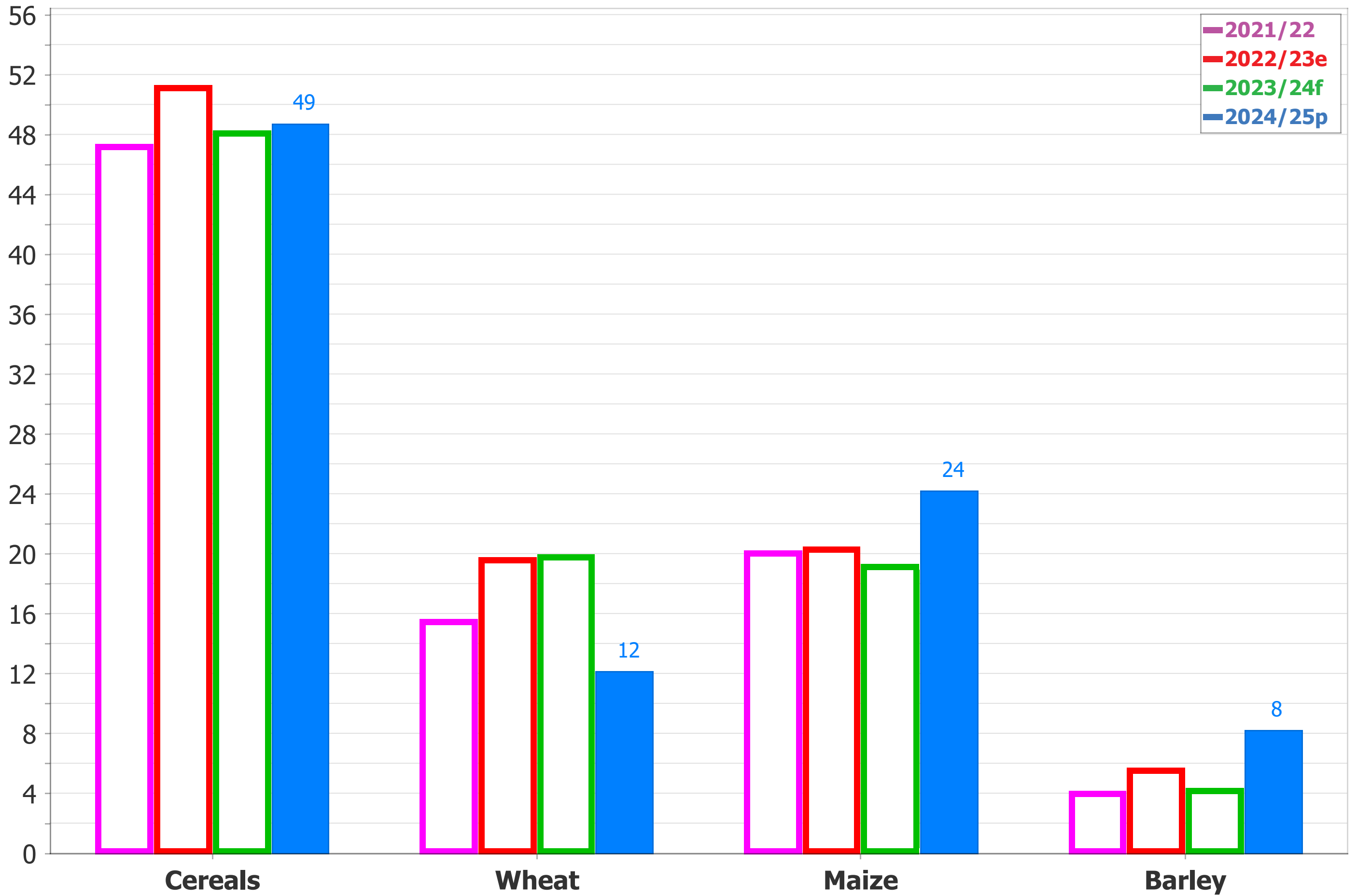
EU production (million tonnes)



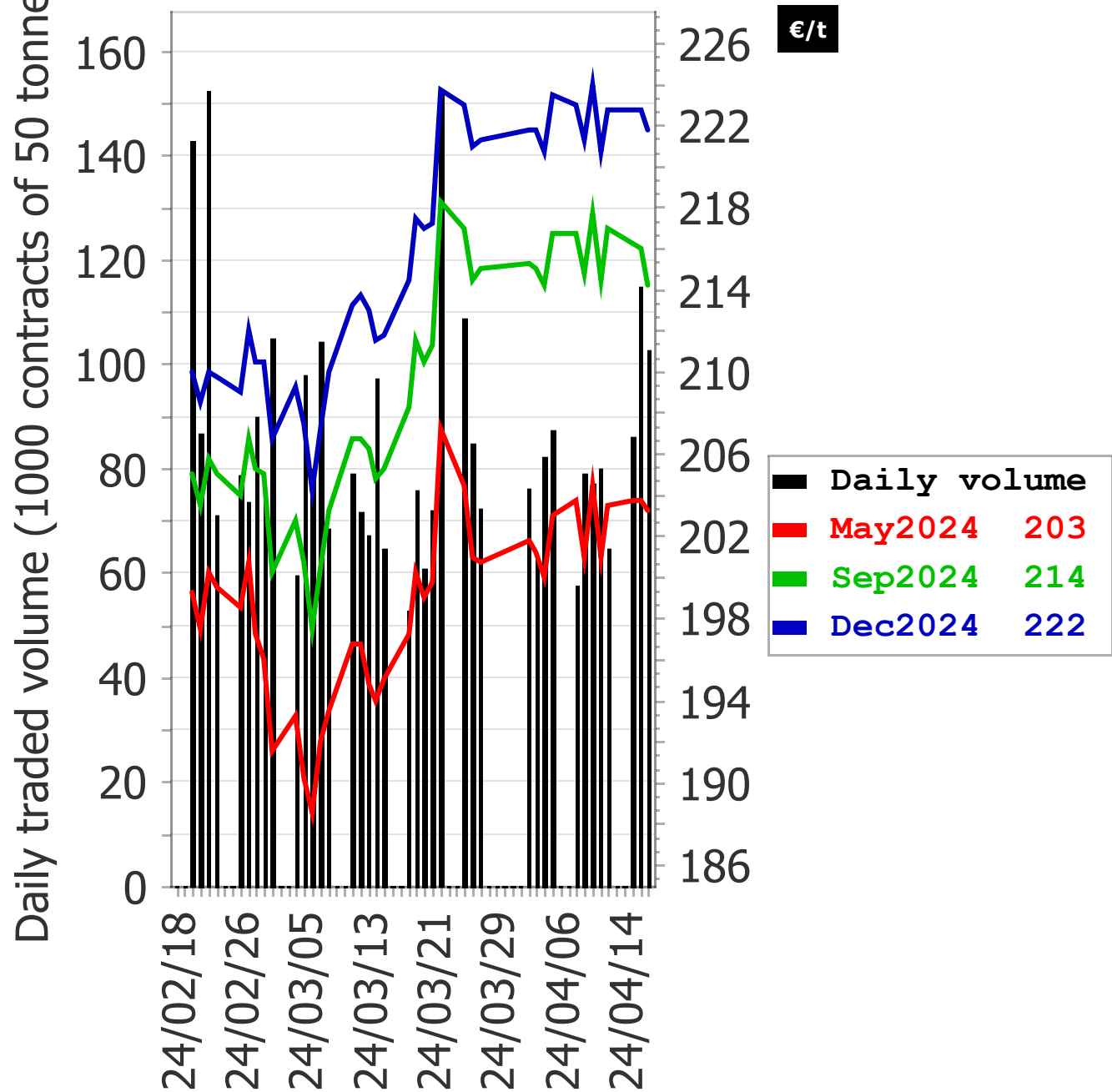
World stocks (million tonnes)



EU stocks (million tonnes)

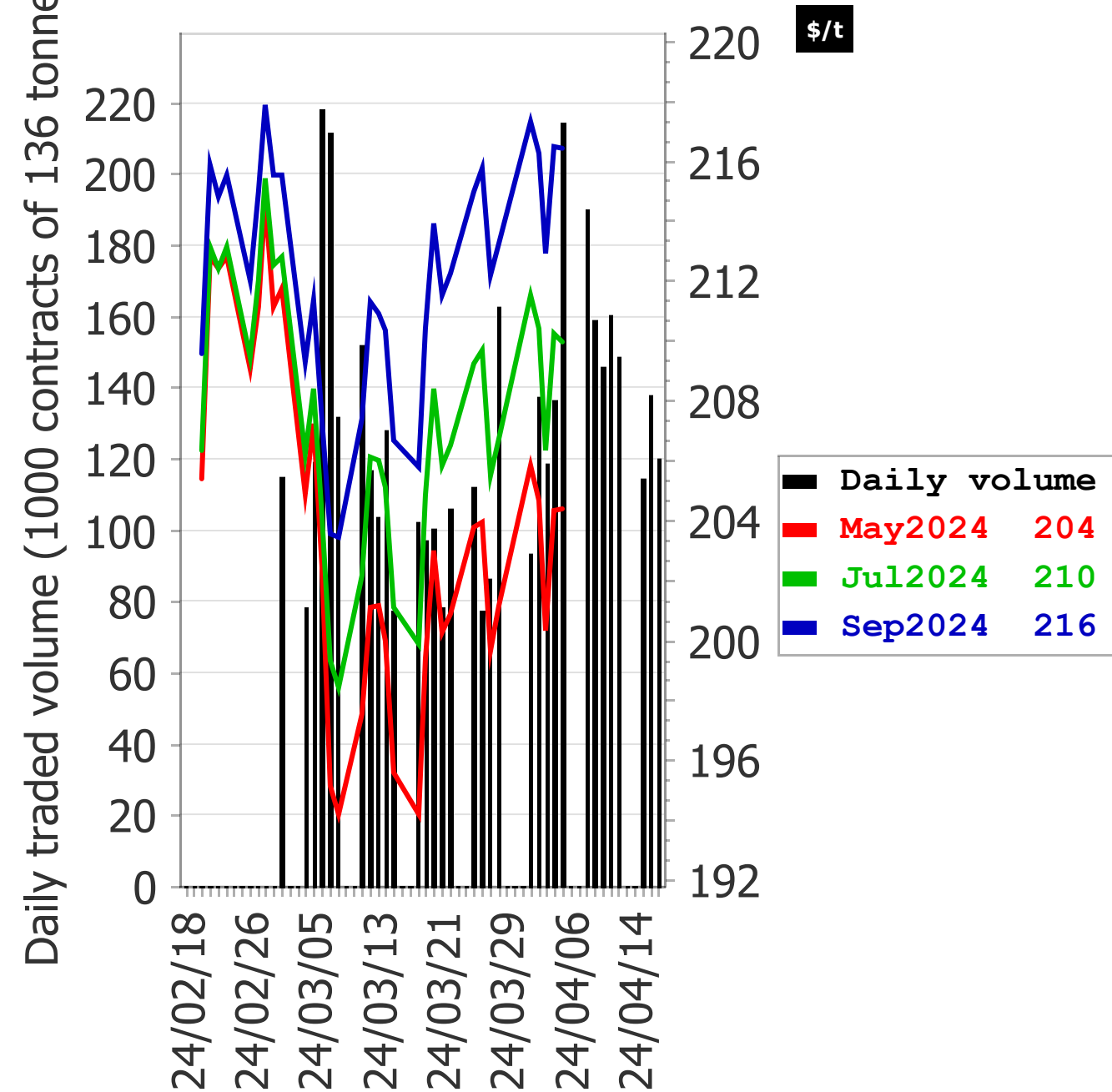


EU (milling) wheat futures terms - 60 days



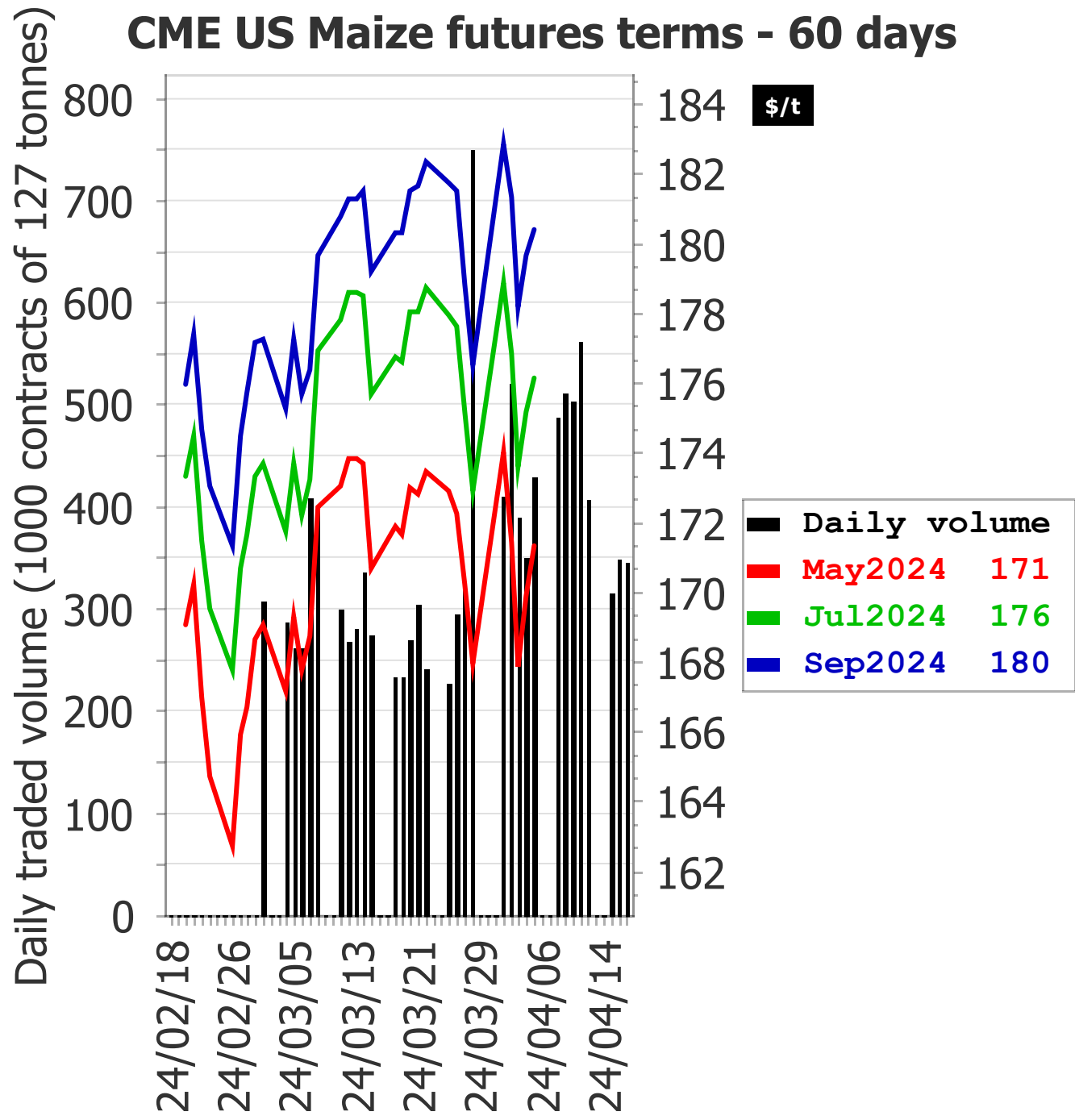
Source: Euronext

US (SRW) wheat futures terms - 60 days



Source: CME

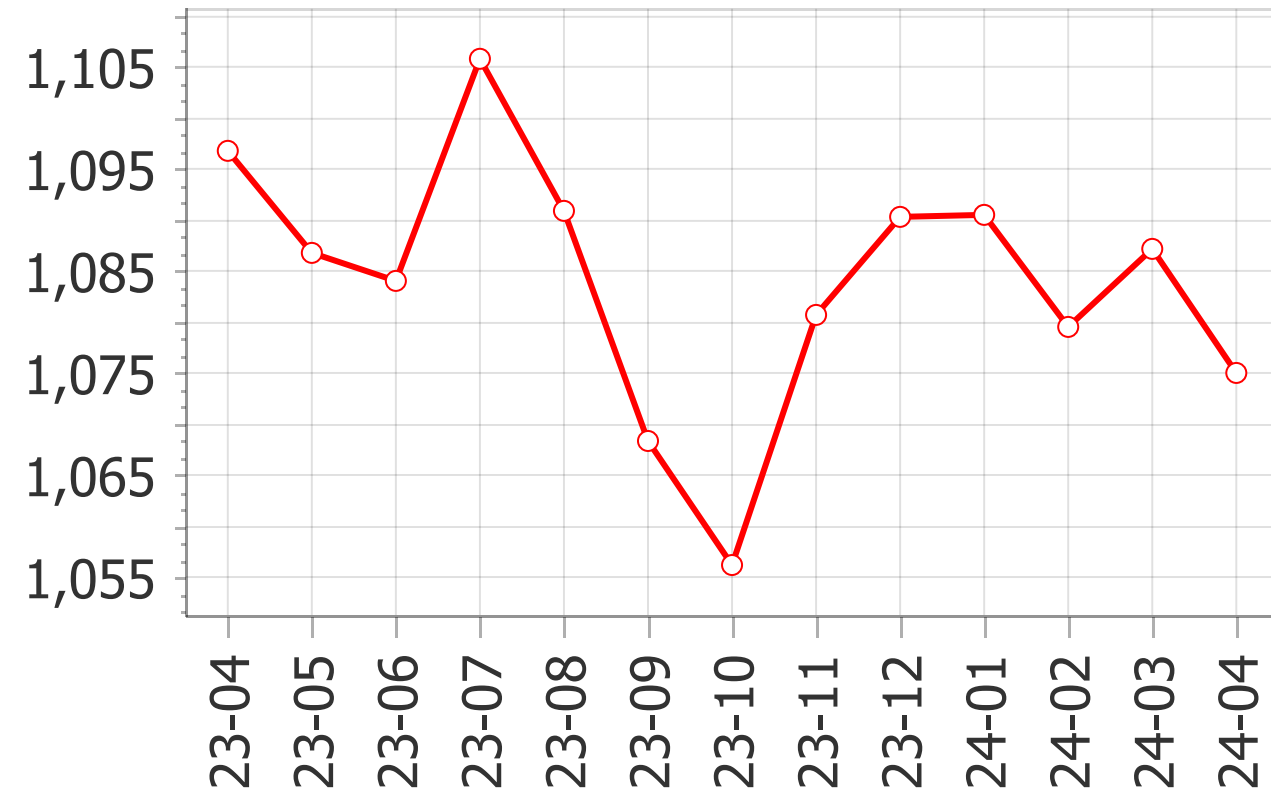
CME US Maize futures terms - 60 days



Source: CME

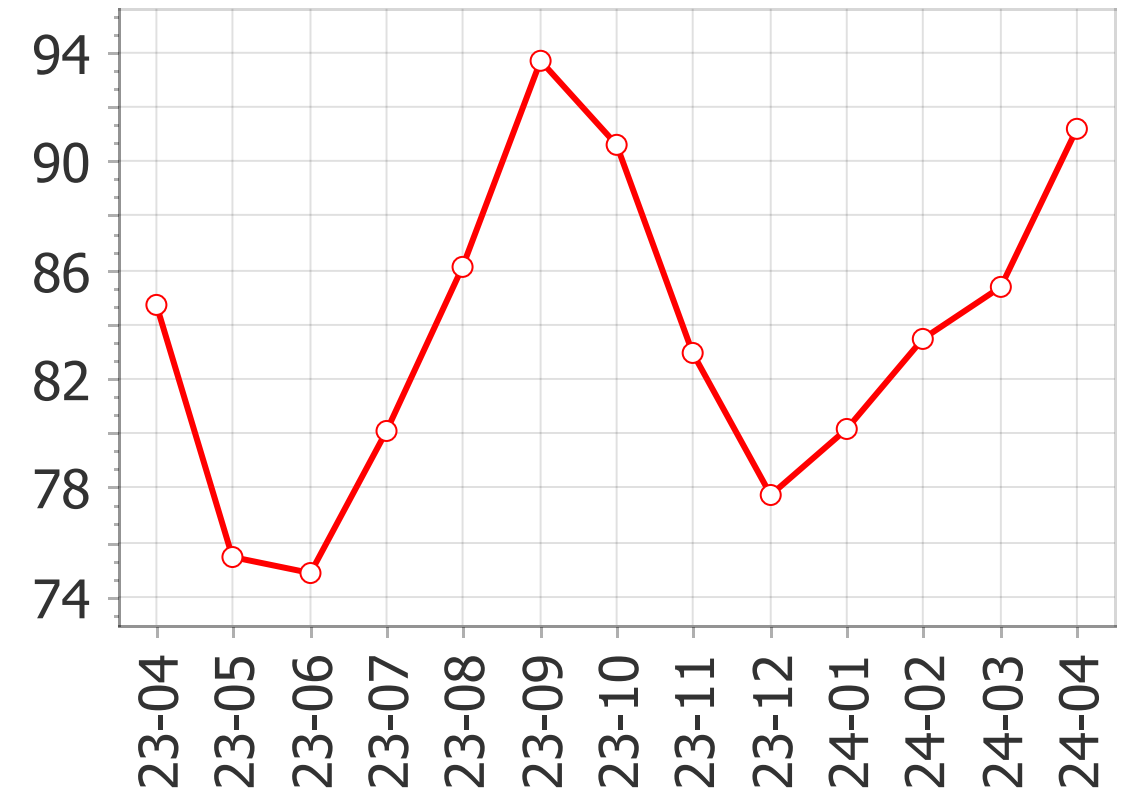
Monthly avg: currency - oil - freight

Exchange rate € vs \$



Source: European Central Bank

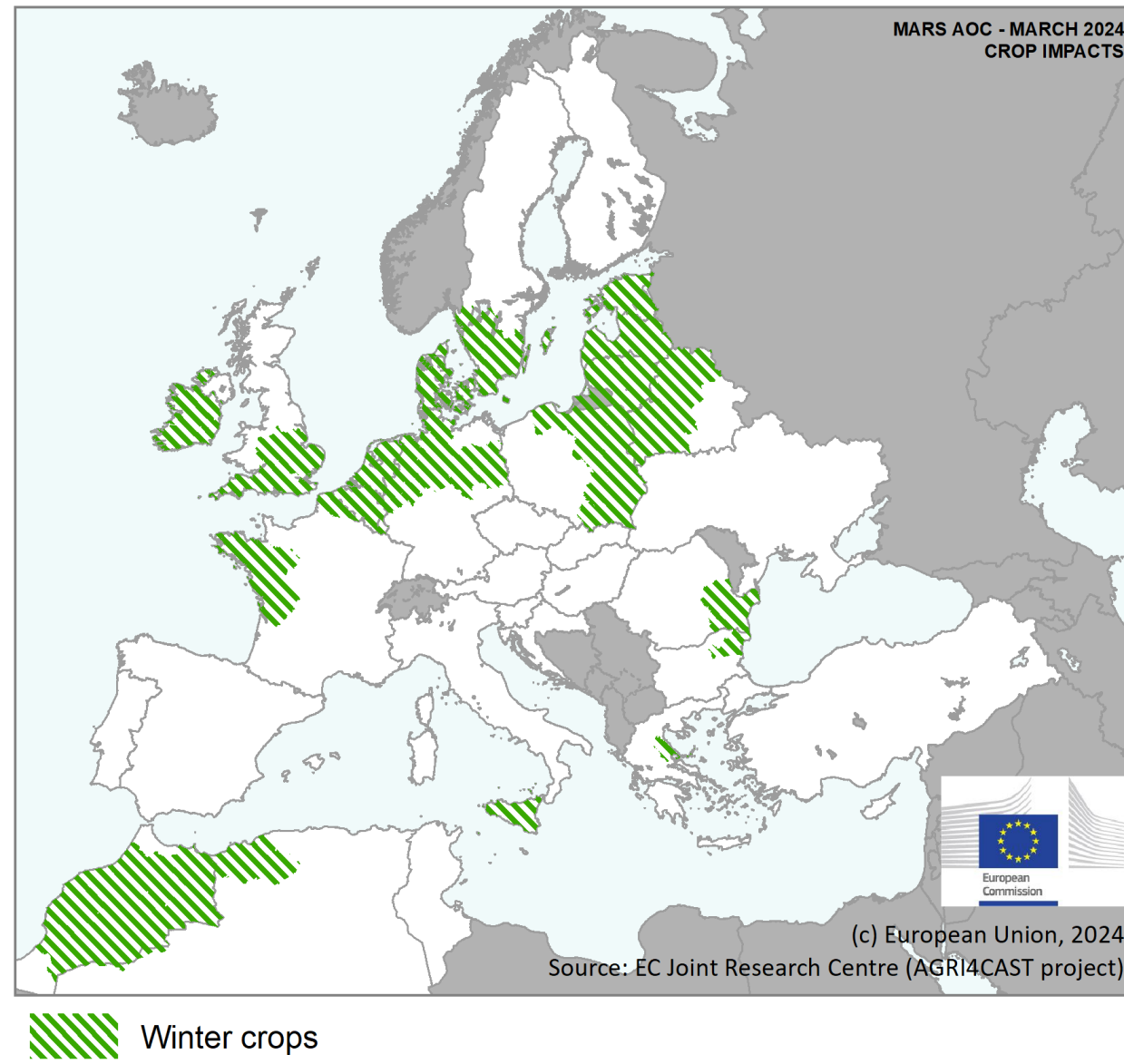
Brent Crude Oil



Source: U.S. Energy Information Administration (EIA)

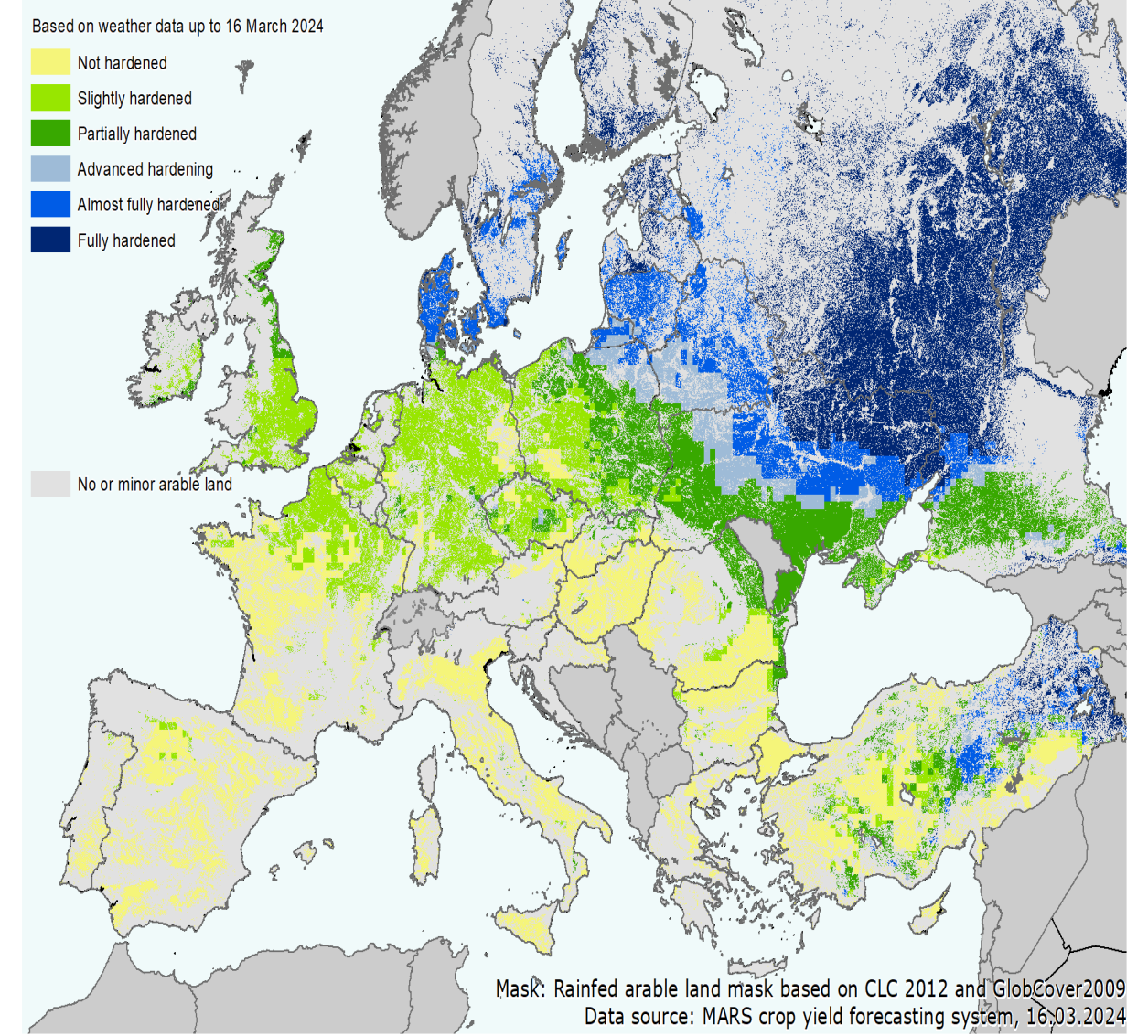
CROP IMPACTS

Reference period: until 16 March 2024



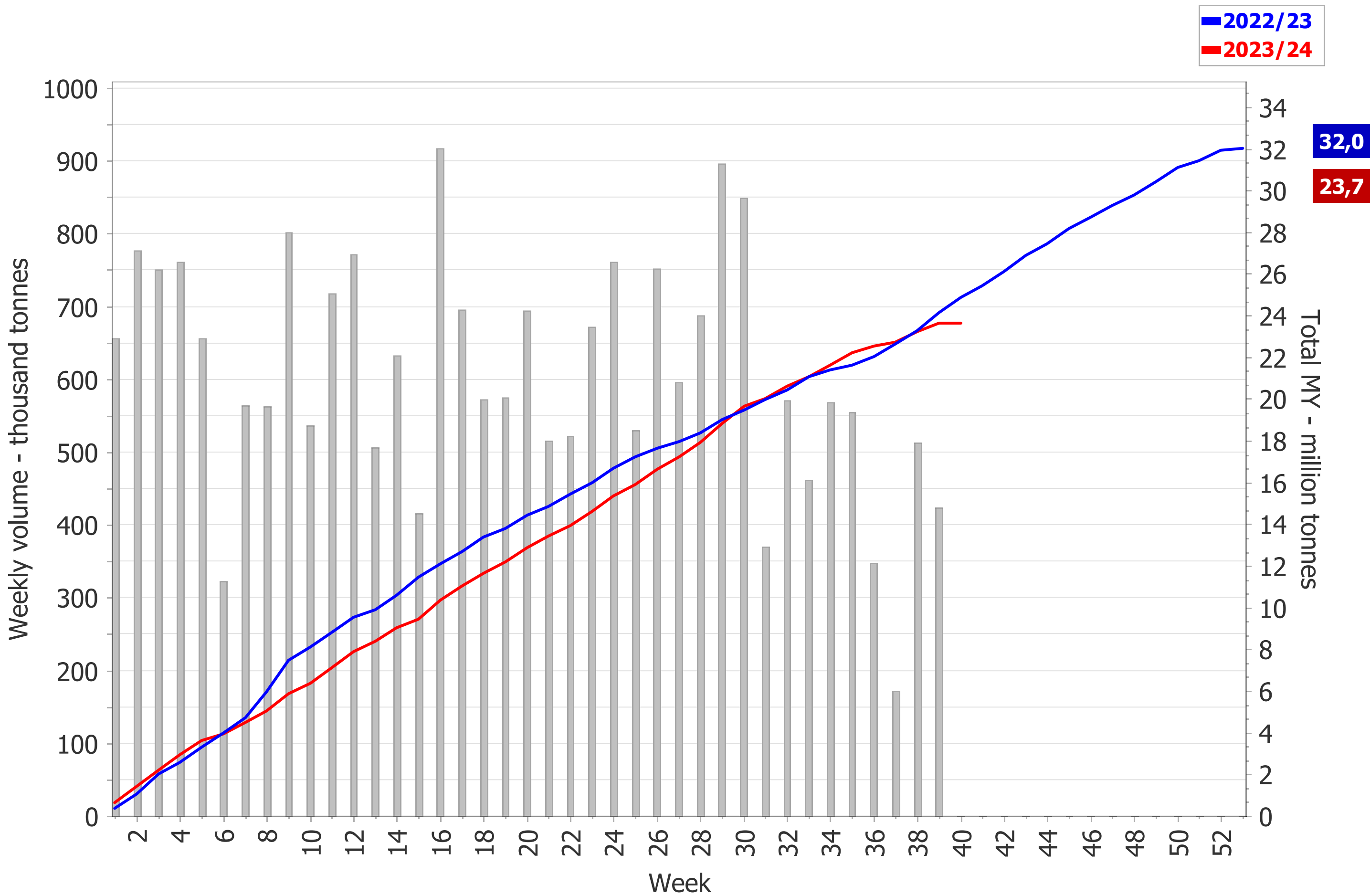
WINTER WHEAT

Simulated hardening stage

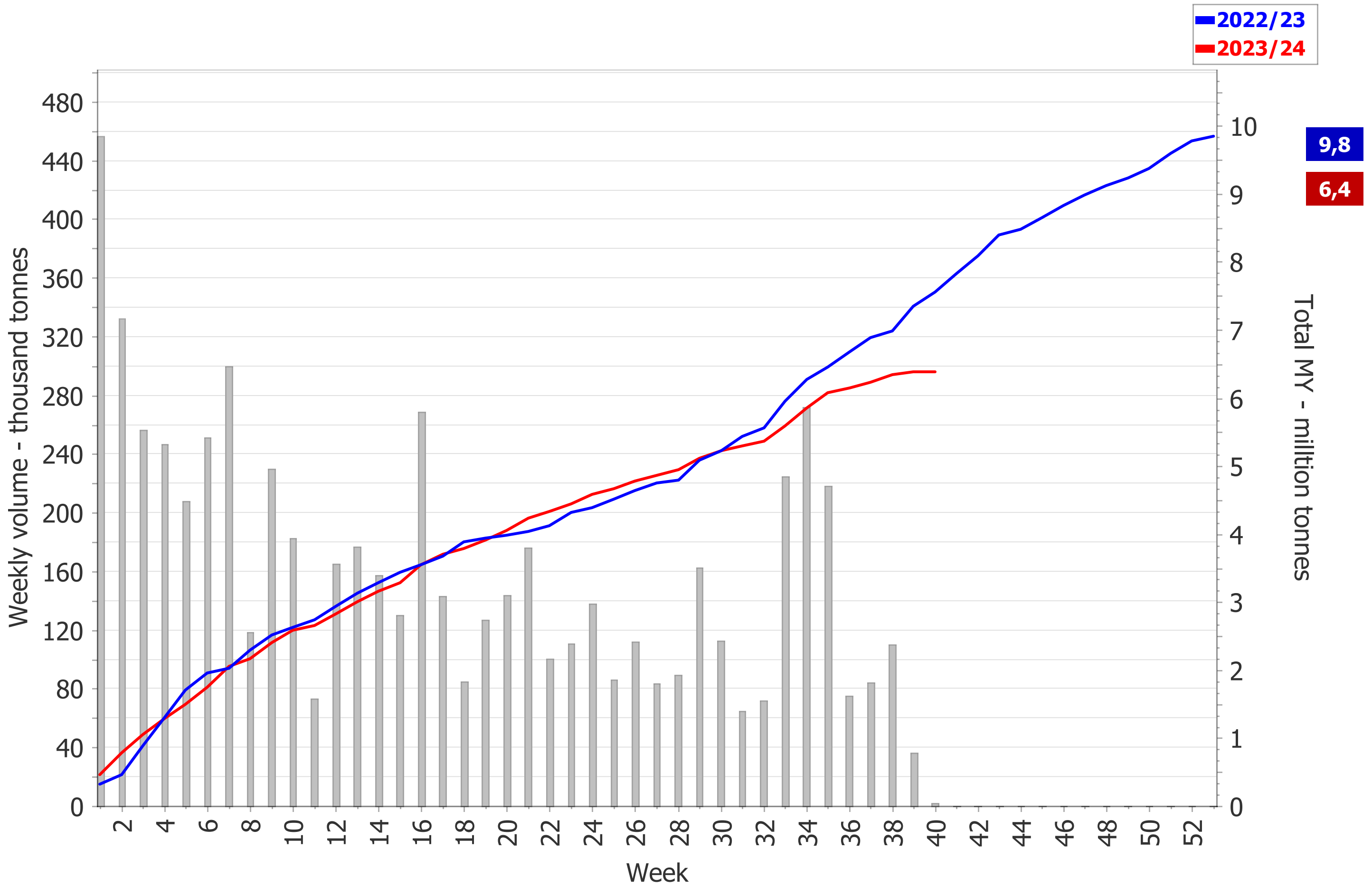


Source: European Commission - DG JRC

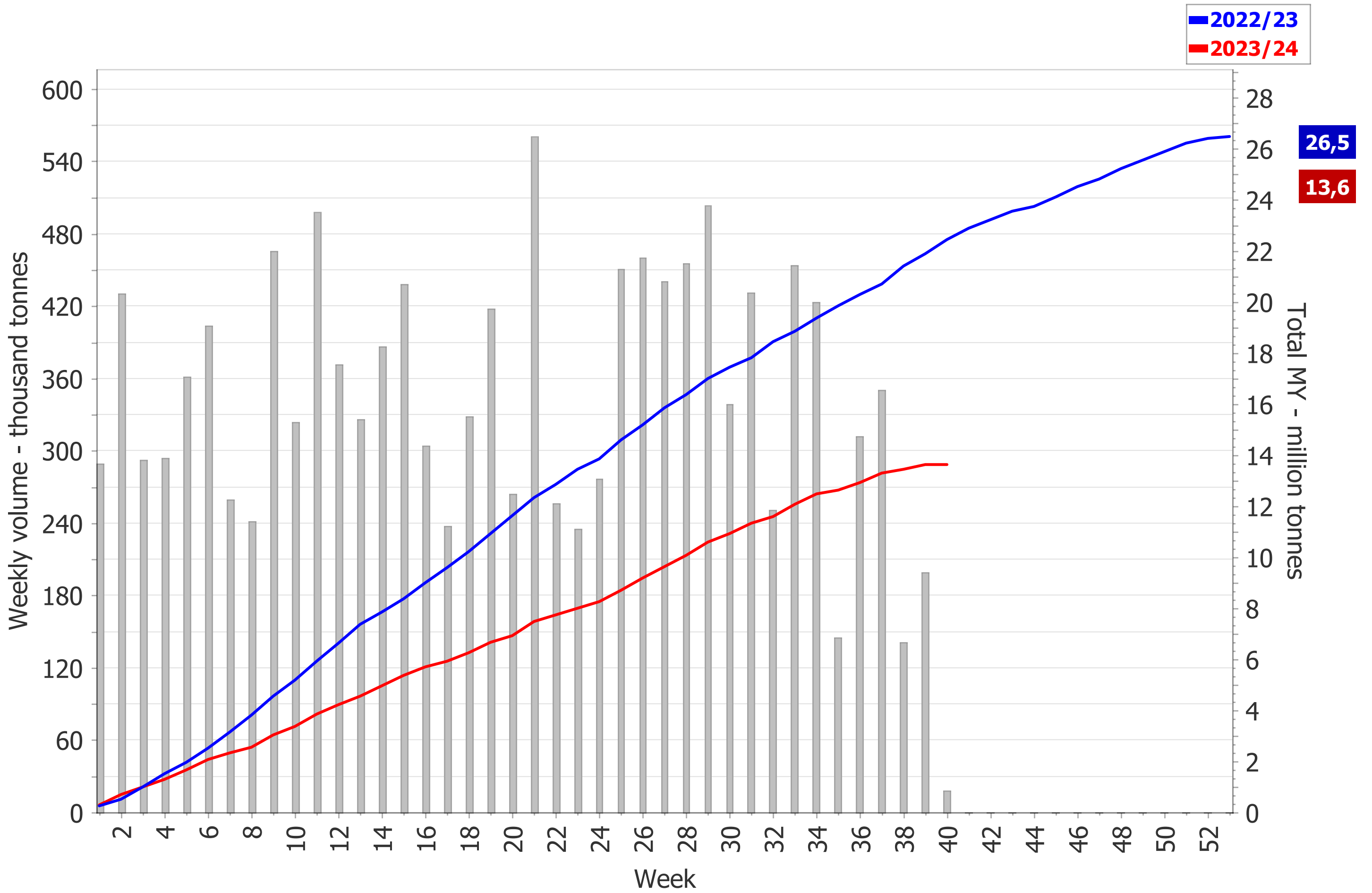
Common wheat & flour - exports



Barley, malt included - exports



Maize - imports



Cereals: trade evolution (EU countries) - July to February

